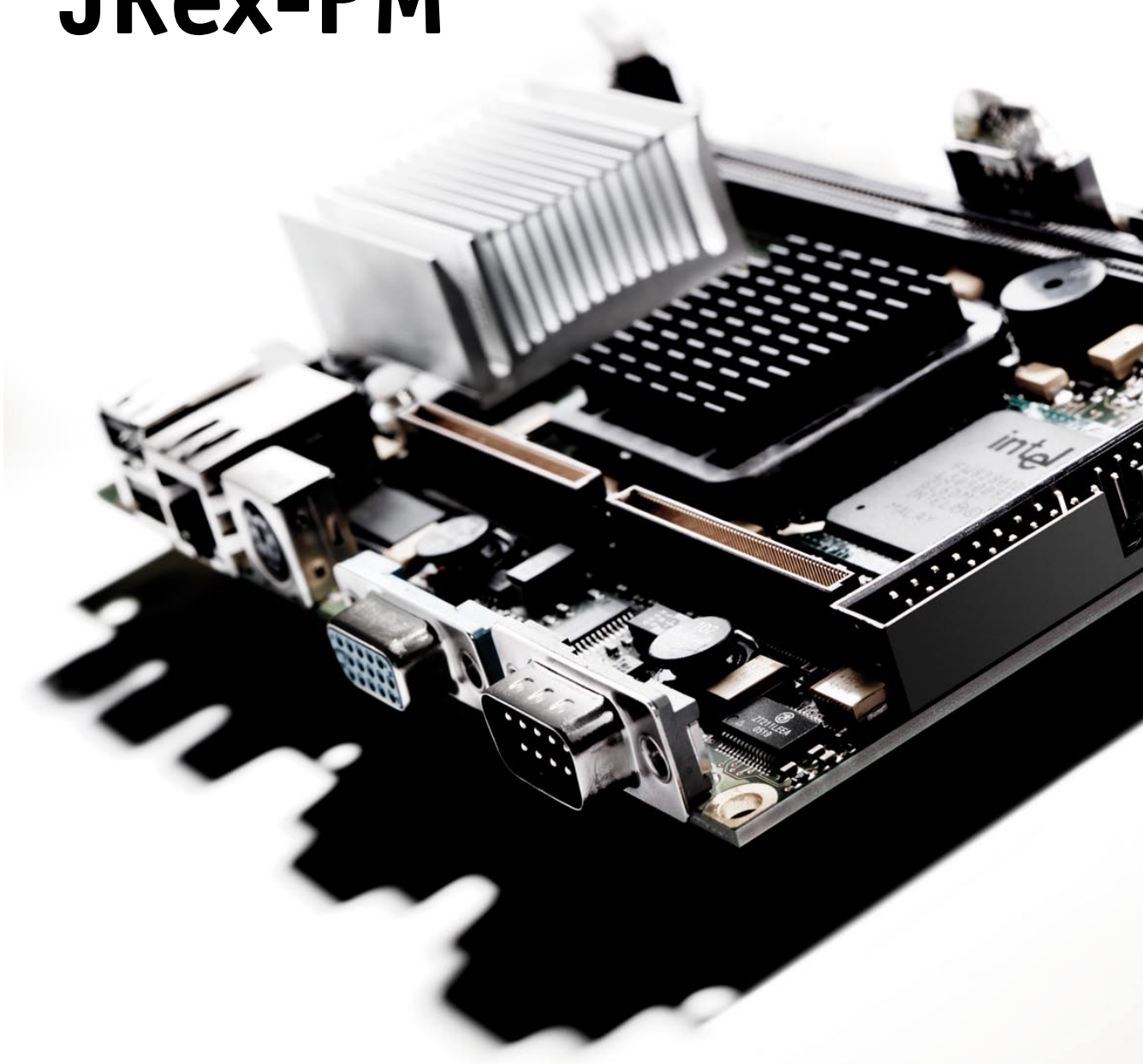




# JRex-PM



powered by  
**Intel® Pentium® M**



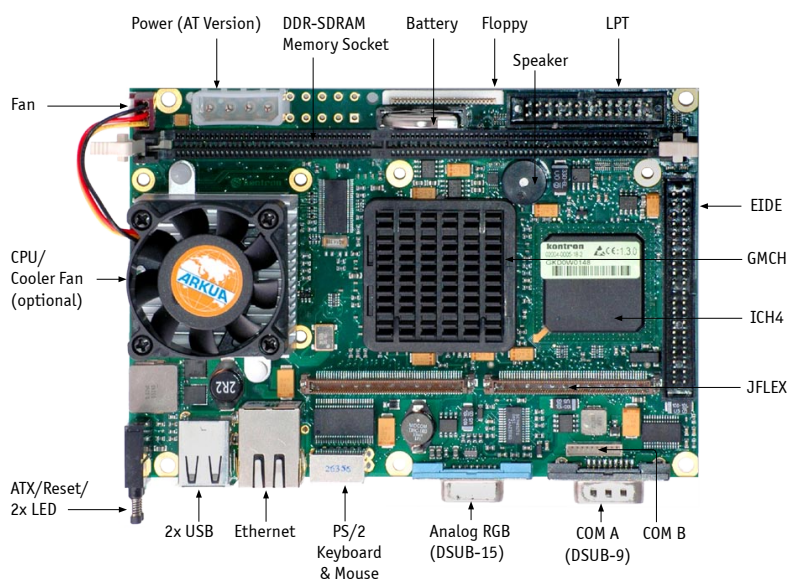
**3.5" embedded line**

- ▶ Intel® Pentium® M up to 1.8 GHz, 852GM/855GME chipset
- ▶ New - Price breaking version with Intel® processor 600 MHz
- ▶ Fastest embedded performance @ low power consumption

## Product Overview

Each **JRex** is a member of the 3.5" board family. JRex modules are characterized by the same pinout and interface for 2x USB 2.0, FAST LAN, Keyboard/Mouse-socket, Compact-Flash™, VGA and COM1. This family feature allows to reuse chassis and maximizes design re-use. This **JRex-PM** hosts an Intel® Pentium® M or Celeron® M processor. A DDR-RAM-DIMM socket for up to 1 GByte allows the use of standard desktop memory and full ATX power supply is as well a standard feature.

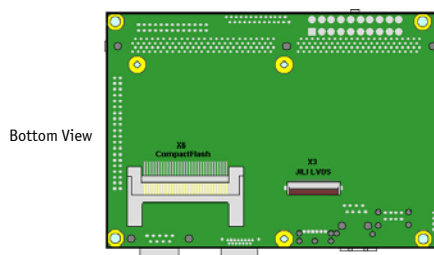
These homogeneous features facilitate easy upgrades within the JRex product family. The graphic controller is included in the chipset, that performs with up to 2x 32 MByte UMA. Connection of displays is simplified when using these units which are complete with a JILI-Interface (JUMPtec® Intelligent LVDS Interface). JILI automatically recognizes which display is connected and independently sets all video parameters. All JRex are plug-and-work enabled to further reduce time-to-market.



## Technical Information

<b>Processor</b>	Intel® processor from 600 MHz up to 1.8 GHz
<b>Chipset</b>	Intel® 852GM/855 GME, ICH4
<b>Chipset features</b>	400 MHz FSB, up to 1 GByte DDR 266/200 integrated USB 2.0, integrated CRT/LCD
<b>Memory</b>	1x SO-DIMM-SDRAM Socket up to 1GByte
<b>Graphic</b>	Intel® Extreme Graphics 2, up to 32 MByte UMA VRAM, DVO, LVDS, CRT, Image Rotation, Dual Independent Display
<b>I/O Features</b>	1 x EIDE Harddisk Interfac, UDMA-100 1 x Compact Flash Socket Type 1 1 x CRT (Analog RGB, DSUB-15) 2 x JFlex™ Extension 1 x Floppy Disk Interface 1 x LPT (Parallel Port) 1 x RS 232 (DSUB-9), 1 x TTL, (pin header) PS/2 Mouse & Keyboard 2 x USB 2.0
<b>Ethernet</b>	10/100 BaseT Ethernet
<b>Form Factor</b>	102 x 147 mm, 3.5" Single Board Computer
<b>Common Features</b>	LAN/USB Boot, DarkBoot, Watchdog, HW Monitor, Real Time Clock, Reset/ATX Feature button
<b>Power Supply</b>	ATX or 5V power supply
<b>Temperature (*)</b>	Operation: 0° to 60° C (with appropriate airflow) Storage: -10° to 85° C
<b>More Features</b>	Plug'n Play compatible to any other JRex and therefore exchangeable

(\*) Ask about extended temperature ranges



## Ordering Information

Article	Part.-No.	Description
JRex-PM	02004-0005-06-4	Intel® Celeron® M (BANIAS) ULV CPU with 600 MHz and 512 KB Cache
JRex-PM	02004-0000-08-2	Intel® Processor 800MHz 0KB L2 cache, FANLESS, ATX
JRex-PM	02004-0005-08-2	Intel® Processor 800MHz 0KB L2 cache, FANLESS, 5V
JRex-PM	02004-0000-18-2	Intel® Pentium® M processor 745 with 1.8GHz, 2MB L2, fan, ATX
JRex-PM	02004-0005-18-2	Intel® Pentium® M processor 745 with 1.8GHz, 2MB L2, fan, 5V
KAB-SBC-SET1	96002-0000-00-1	Cable set for any SBC: PS/2 keyboard, IDE, one serial port, PS/2 mouse, 10/100 LAN, USB



### Diamond Point International (Europe) Ltd

Suite 13, Ashford House, Beaufort Court  
 Sir Thomas Longley Road, Rochester, Kent, ME2 4FA, UK  
 Phone 01634 300900 - Fax 01634 722398 - Email sales@dpie.com – Web www.dpie.com

Rev:JRex-PM 22092008P01. Copyright © 2007 Kontron Embedded Modules GmbH. All data is for information purposes only and not guaranteed for legal purposes. Subject to change without notice. Information in this datasheet has been carefully checked and is believed to be accurate; however, no responsibility is assumed for inaccuracies. All rights reserved. "JILITEC", "JILI", "EIDE" and "JFlex" are trademarks or registered trademarks of Kontron Embedded Modules GmbH. Kontron is trademark or registered trademark of Kontron AG. All other brand or product names are trademarks or registered trademarks or copyright by their respective owners and are recognized.