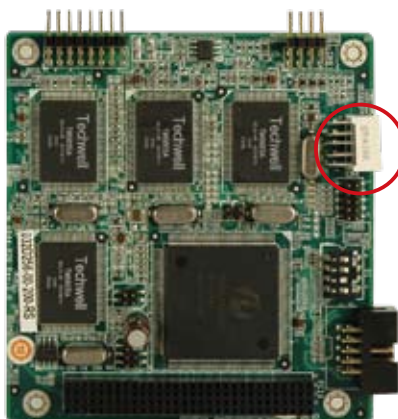


# PM-6844

PCI-104 Video/Audio Capture Card with Four Video Input Channels, Total 120 fps@720x480(NTSC), and One Audio Input Channel



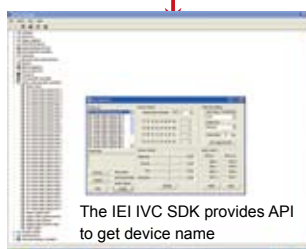
**Low Power**

## Features

- Ultra low power consumption, only 4.5 W for 30 fps @ D1 per channel
- No thermal issues, no heat sink required
- Best Video quality with 10-bit ADC and 4H composite for NTSC / PAL / SECAM auto sensing
- 10-bit ADC for Analog Sound digitizing for better audio quality
- 30 fps @ 720 x 480 (NTSC) per channel
- One channel audio capture, channel selectable by software
- Support Multiple Card (maximum 16 ports video input and 16 ports audio input )
- Windows® 2000, XP and Linux kernel 2.6 drivers available
- Bundle IEI Argus surveillance software free supports 25/30fps@1 channel video/audio monitoring and recording
- Applications: Video surveillance, security, public transportations, police and government



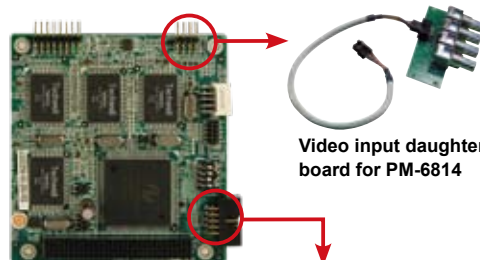
The ID is programmed by a 4-digit DIP switch  
Digit LED to show its ID (identification)



The IEI IVC SDK provides API to get device name



IEI ARGUS Digital Video Surveillance Software



Video input daughter board for PM-6814



Four 3.5 mm audio jacks

## Specifications

### Interface

Video Input	4 channels composite video NTSC, PAL and SECAM auto sensing
Connector	BNC
Audio Input	4 channels analog audio
Connector	Audio kit with 3.5 mm audio jack connector
PCI Interface	PCI 2.1 compliance
Card ID	Selectable with LED for ID indication

### Software support

Device Driver	Windows® 2000, XP Linux kernel 2.6
SDK	Provide SDK and demo program with sample source code in C++
Surveillance software support	Software supports 100/120fps@4 channel video/audio monitoring and recording

### Multiple Card Support

Card	Video Port	Audio Port	Support max. Channel / Resolution	Total Frame (NTSC/PAL)
1	4	4	4 channels, D1(720 x 480)	120/100 fps
4	16	16	16 channels, QVGA(320 x 240)	480/400 fps

### Video Processing

Video engine	4 x Techwell TW6805	
Resolution	NTSC:	PAL / SECAM:
	720 x 480	720 x 576 640 x 480
	720 x 240	720 x 480 640 x 240
	640 x 480	720 x 288 352 x 288
	640 x 240	720 x 240 320 x 240
	320 x 240	704 x 576 176 x 144
Frame rate	160 x 120	704 x 288 160 x 120
	NTSC: Four video channels with 30 fps @ D1 per channel PAL and SECAM: Four video channels with 100 fps @ D1 per channel	

### System Requirement

System	x86 compatible computer
Graphic	DirectX compatible VGA card supporting YUV overlay mode

### Others

Dimensions	95.89 mm x 90.17 mm
Operation temperature	0°C~60°C (32°F~140°F ), non-condensing
Power consumption	4.5W, 0.9A@5V (without relay)

## Packing List

1 x PM-6844	1 x audio input kit
1 x utility CD	1 x QIG
1 x video input daughter board with cable	
1 x IEI Argus Surveillance software CD	

## Ordering Information

Part No.	Description
PM-6844-R20	PCI-104 video/audio capture card with four video input channels, total 120 fps@720x480(NTSC), and one audio input channel

1 Industrial Computing Solutions  
2 Embedded Computing Solutions  
3 RISC-Based Embedded Solutions  
4 Industrial Data Collector/Server Solutions  
5 Video Capture Solutions  
6 I/O Communication Solutions  
7 Panel Solutions  
8 Power Supply/Network Communication/Peripherals