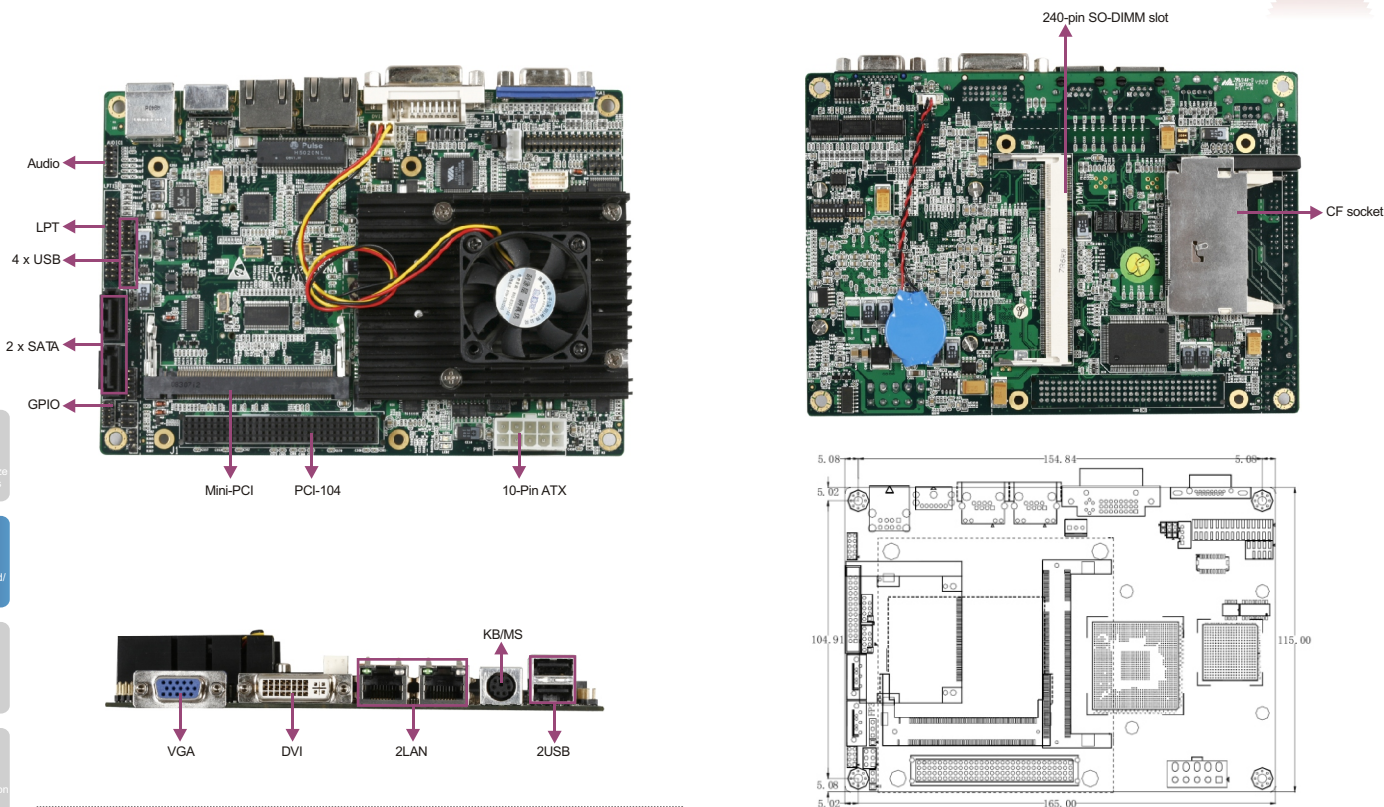


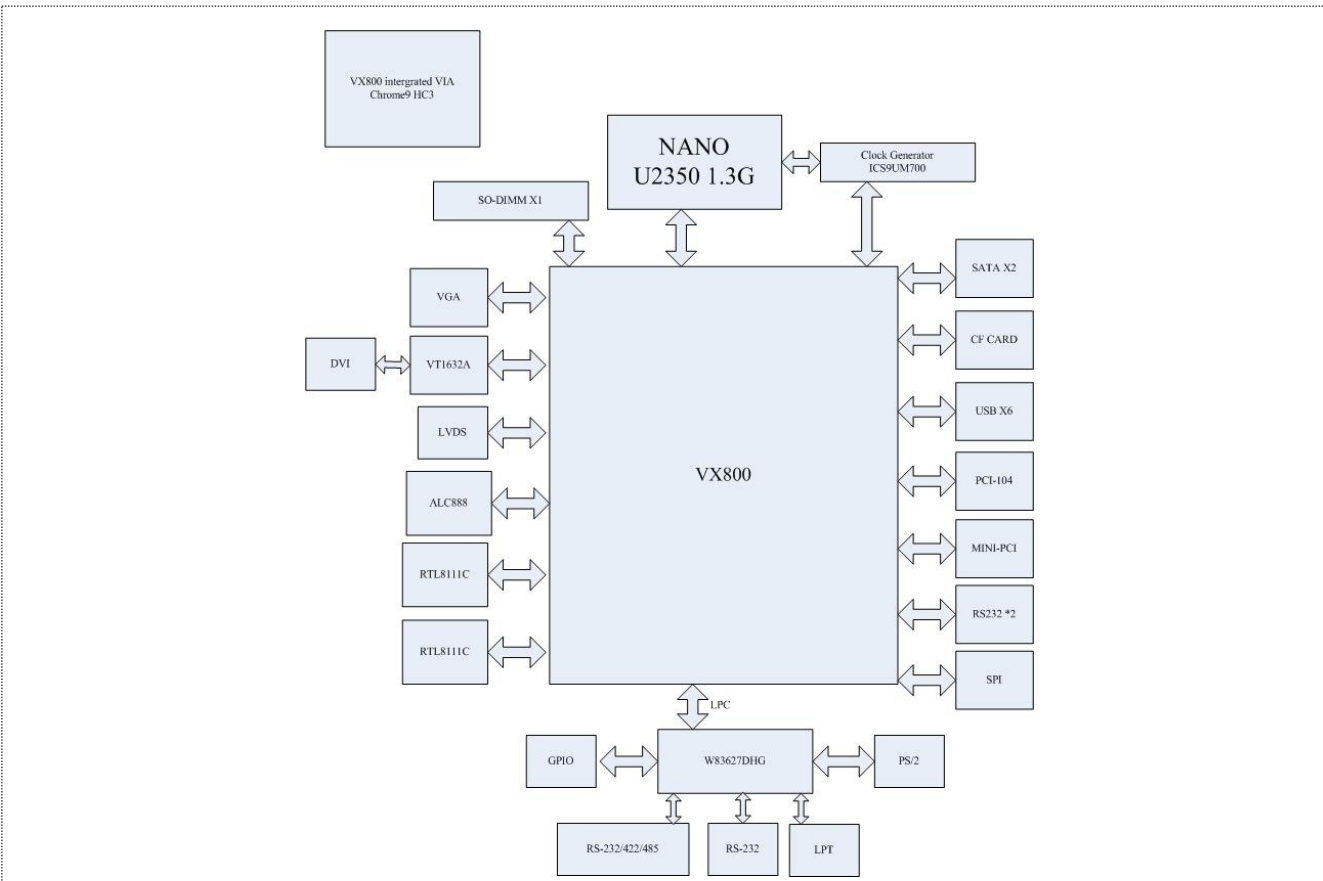
EC4-1721CLD2NA



EPIC SBC with Processor and LVDS/VGA/CF/LAN/Audio



Board Diagram



1

Full-Size/Half-Size Slot CPU Cards

2

SBC/Motherboard/Modules

3

Embedded Box PC

4

Network Application Computers

5

Industrial PC

6

HMI

7

EVOG Rugged Series

8

MCC Series

9

Chassis

10

Data Acquisition Boards & Modules

11

Accessories

1

Full-Size/Half-Size Slot CPU Cards

2

SBC/Motherboard/Modules

3

Embedded Box PC

4

Network Application Computers

5

Industrial PC

6

HMI

7

EVOG Rugged Series

8

MCC Series

9

Chassis

10

Data Acquisition Boards & Modules

11

Accessories

Features

- high-performance, small-package, low-power embedded EPIC architecture single board computer
- Integrates VIA Chrome9 HC3 graphics core, supporting Direct X9 3D
- VIA Nano processor and VX800 chipset Excellent Shock and Vibration Characteristics
- Supports VGA-LVDS, VGA+ DVI dual display
- Onboard 2 x 10/100/1000Mbps GbE controller
- Supports 6 x USB, 2 x SATA, 4 x COM, 1 x LPT, 1 x Mini-PCI, 1 x CF

Specifications

System	
Processor	VIA Nano™ U2350 processor, with 800MHz FSB
Chipset	VIA VX800 chipset
Memory	1 x SO-DIMM DDR2 slot, supporting a maximum capacity of 2GB
Hardware Monitor	N/A
Watchdog Timer	N/A
Expansion Interface	1 x PCI-104, 1 x Mini-PCI
Storage	
IDE	N/A
Serial ATA	2 x SATA port
Floppy	N/A
CF	1 x CompactFlash socket
DOC/DOM	N/A
I/O Interface	
USB	6 x USB2.0 port
Serial Port	3 x RS-232 serial port, 1 x RS-232/422/485 serial port (COM1)
Parallel Port	1 x LPT
IrDA	N/A
GPIO	4 x digital input/output
Audio	VIA Vinyl HD Audio decoder
Keyboard/Mouse	1 x PS/2 keyboard/mouse interface

Display	
Chipset	Integrates VIA Chrome9 HC3 graphics core and supports Dx9 3D graphics card
Memory	Up to 256 MB frame buffer
Resolution	CRT resolution up to 1920 x 1440@75Hz
Dual Display	Build-in VGA, 24-bit LVDS, expandable DVI outputs
Ethernet	
Chipset	Realtek RTL8111C
Speed	10/100/1000Mbps
Connector	2 x RJ45
Mechanical and Environmental	
Dimensions	165mm x 115mm
Operating Temperature	-20°C~70°C
Storage Temperature	N/A
Operating Humidity	5%-90%, non-condensing
Power	
Power Supply	10-pin ATX power supply connector
Power Consumption	N/A
Operating System	
Windows OS	Windows XP
Embedded OS	Linux/XP Embedded

Available Accessories

Part Number	Name	Description	Qty.
2360-014891	Power supply cable/RoHS	One male 20 Pin (2x10) port to female 10 Pin (2x5) connector (4.2mm pitch), length: 150mm/RoHS	1
2360-027281	COM cable/RoHS	DB9 male connector to 30 Pin 2.0mm pitch female connector/UL2651/28AWG/length: 300mm, UL2464/28	1
2360-014781	Dual USB ports with bracket/RoHS	Two USB ports to one 10 Pin (2x5) connector (2.0mm pitch), length: 550mm/RoHS	1
2360-011211	Audio cable with bracket/RoHS	Three audio jacks to one 10 Pin (2x5) connector (2.0mm pitch), length: 300mm/RoHS	1
2360-011221	Parallel port cable/RoHS	DB25 connector to 26 Pin (2x13) connector (2.0mm pitch), length: 300mm/RoHS	1
2360-005031	Y-cable for keyboard and mouse/RoHS	One Mini-DIN port to two PS/2 ports, length: 250mm/RoHS	1
2360-027521	COM cable/RoHS	DB9 male connector to 2x5 female 2.0mm pitch connector, length: 300mm	1
2360-017961	SATAHDD cable/RoHS	SATA7 Pin to SATA7 Pin with elbow connector, length: 550mm/RoHS	1
2330-000011	Jumper/RoHS	Pitch: 2.0mm, black, sealed tail	1
—	Setup Guide/RoHS	AMI/BIOS Setup Guide (for Core/8)	1
—	Driver CD/Protective film/Chinese and English/RoHS	EC4-1721CLD2NA	1
—	User Manual/Chinese and English/RoHS	EC4-1721CLD2NA	1

Ordering Information

Part Number	Model Number	Description
0030-010721	EC4-1721CLD2NA	Motherboard/RoHS
0030-010720	EC4-1721CLD2NA	Motherboard