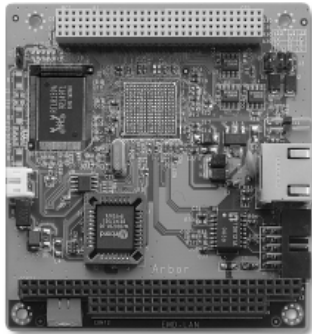


## Em104P-LAN100R

10/100 Mbps Realtek 8139C Ethernet Module



### Features

- LAN 10/100Mbps, RTL8139C
- Full Duplex transfer mode
- Power saving and Wake-on-LAN

### Specifications

#### Chipset

Realtek RTL8139C

#### Protocol / Performance

10 Mbps and 100 Mbps meet IEEE 802.3X

#### Boot ROM support

Up to 128KB Flash Memory Boot-ROM

#### Indicator LEDs

2 LED on RJ-45 connector - Activity/Link and 100 Mbps indicator additional 4-pin header for external LEDs

#### Connectors

RJ-45 interface connector 10-pin box-header for extension cable with RJ-45 connector with LED, 3-pin wake up LAN control line

#### Power Saving and Wake-up LAN

Advanced power saving mode when LAN function or wake-up function is not used, supports Link Change, Microsoft "Wake-up Frame" and AMD "Magic Packet" for WOL function

#### OS Support

Microsoft Windows NT4.0, Microsoft Windows\* 95, 98, 2000, XP, CE, Novel NetWare\* 3.11, 3.12 & 4.1x, 5 Server, Packet driver for UNIX Client, UnixWare 7.0, Linux, SCO Unix, MAC, QNX, Free BSD, Macintosh Mac OS 8.x/9.x

#### Pressfit PC/104 Connectors

High quality pressfit connectors for ISA and PCI bus to guarantee optimal connection and fit

#### Power Requirement

0.52 W (105 mA @ +5 V) fully functional

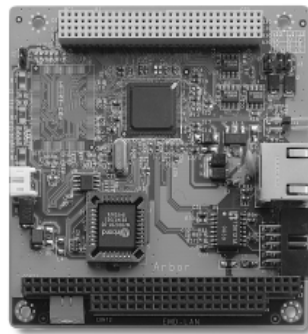
### Ordering Information

#### Em104P-LAN100R

PC/104-Plus fast Ethernet module with Realtek RTL8139C

## Em104P-LAN100N

10/100 Mbps Intel 82559 Ethernet Module



### Features

- LAN 10/100Mbps, Intel 82559
- RJ-45 connector with 2 LED
- Power saving and Wake-on-LAN

### Specifications

#### Chipset

Intel 82559

#### Protocol / Performance

10 Mbps and 100 Mbps meet IEEE 802.3X

#### Boot ROM support

Up to 128KB Flash Memory Boot-ROM

#### Indicator LEDs

2 LED on RJ-45 connector, additional 4-pin header for external LEDs

#### Connectors

RJ-45 interface connector 10-pin box-header for extension cable with RJ-45 connector with LED, 3-pin wake up LAN control line

#### Power Saving and Wake-up LAN

Advanced power saving mode when LAN function or wake-up function is not used, supports Link Change, Microsoft "Wake-up Frame" and AMD "Magic Packet" for WOL

#### OS Support

Microsoft Windows NT4.0, Microsoft Windows\* 95, 98, 2000, XP, CE, Novel NetWare\* 3.11, 3.12 & 4.1x, 5 Server, Packet driver for UNIX Client, UnixWare 7.0, Linux, SCO Unix, MAC, QNX, Free BSD, Macintosh Mac OS 8.x/9.x

#### Pressfit PC/104 Connectors

High quality pressfit connectors for ISA and PCI bus to guarantee optimal connection and fit

#### Power Requirement

0.75 W (150 mA @ +5 V) fully functional

### Ordering Information

#### Em104P-LAN100N

PC/104-Plus fast Ethernet module with Intel 82559

## Em104P-LAN100NT

Triple port Intel 82559 Ethernet



### Features

- 3x Intel 82559, 10/100 Mbps
- Full Duplex transfer mode
- Power saving and Wake-on-LAN

### Specifications

#### Chipset

3x Intel 82559 (Em104p-LAN100NT)

#### Protocol / Performance

10 Mbps and 100 Mbps meet IEEE 802.3X

#### Boot ROM support

Up to 128 KB Flash Memory Boot-ROM

#### Indicator LEDs

2 LED on RJ-45 connector, additional 4-pin header for external LEDs

#### Connectors

RJ-45 interface connector 10-pin box-header for extension cable with RJ-45 connector with LED, 3-pin wake up LAN control line

#### Power Saving and Wake-up LAN

Advanced power saving mode when LAN function or wake-up function is not used, supports Link Change, Microsoft "Wake-up Frame" and AMD "Magic Packet" for WOL

#### OS Support

Microsoft Windows NT4.0, Microsoft Windows\* 95, 98, 2000, XP, CE, Novel NetWare\* 3.11, 3.12 & 4.1x, 5 Server, Packet driver for UNIX Client, UnixWare 7.0, Linux, SCO Unix, MAC, QNX, Free BSD, Macintosh Mac OS 8.x/9.x

#### Power Requirement

0.75 W (150 mA @ +5 V) fully functional

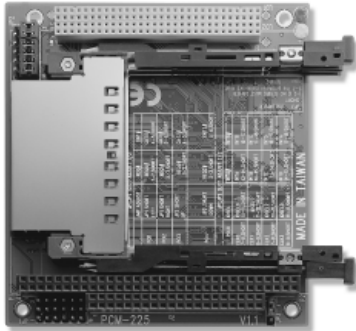
### Ordering Information

#### Em104P-LAN100NT

PC/104-Plus triple port fast Ethernet module with three Intel 82559

## Em104P-PCM

PCMCIA Card Drive



### Features

- One slot PCMCIA card bus module
- Support Type I/II/III PCMCIA cards
- 16-bit data bus
- 2 slots of PCMCIA card bus module
- Support Type I/II/III PCMCIA cards
- 16-bit data bus

Em104P-PCM model consist of a PC/104-Plus interface module with two built-in PCMCIA card slots. Two PCMCIA slots are built into the interface board. Em104P-PCM is ideal for user who require two PCMCIA interface slots where easy accessibility to the PCMCIA slots is not required. The PCMCIA slots on the module provides full support for all Type I, Type II and Type III PCMCIA memory, I/O and ATA hard disk cards.

Comply with PCMCIA v. 2.1 and JEIDA 4.2 16-bit legacy mode support

PCI way legacy mode support

Mix and match 5V/3.3V PC card, 16/32 cards, 3.3V CardBus Cards

Applies T/I 1420 Controller

Support hot-swap function

### Ordering Information

#### Em104P-PCM/1

PC/104-Plus single slot PCMCIA module

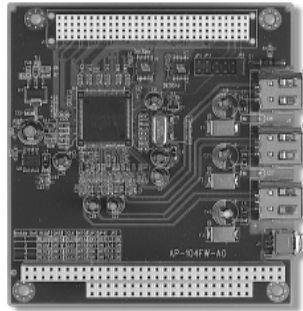
#### Em104P-PCM/2

PC/104-Plus dual slot PCMCIA module 2 port PCMCIA module



## Em104P-1394

1394 Ports PC/104-Plus Module



### Features

- Compatible IEEE-1394-2000 Fire Wire Standard
- Open Host Controller Interface (OHCI) compliant
- Three high speed Serial Interface
- Speeds of 100/200/400 MBits/sec
- Standard 6-way IEEE-1394 Connectors for self-powered or non powered devices

Em104P-1394 is a high performance controller providing 3 serial ports conforming to the IEEE-1394 OHCI specification - popularly known as FireWire. Em104P-1394 provides an ideal interface for attaching high speed Audio, Video and Storage peripherals to an embedded system. Automatic detection and configuration of devices (without the need for on-board jumpers) ensures robust system operations and high reliability.

Em104P-1394 provides a distinct advantage over other communications and interfacing controllers by allowing multiple devices to be attached simultaneously on the high serial bus. Three serial ports are provided enabling up to 63 devices to be connected with cable lengths of over 4.5M. Em104P-1394 is supported by a suite of drivers for Windows98SE/Me/2000/XP and Mac OS.

Support Interface

PC/104 extension

PC/104 Plus extension

### Ordering Information

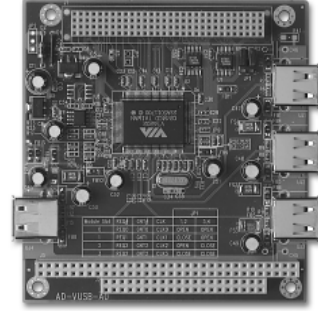
#### Em104P-1394

3 high performance 1394 ports PC/104-Plus module



## Em104P-USB2

4-Port USB 2.0 PC/104-Plus Module



### Features

- USB 2.0 (480 Mbps)
- USB 1.1/USB 1.0 (12 Mbps)
- OHCI and EHCI Host Controller Core
- 4 A Type USB 2.0 Ports
- Data transfer rate 1.5/12/480 Mbps Speed

Em104P-USB2 is a 4-port Universal Serial Bus (USB) 2.0 PC/104-Plus adapter for upgrading Embedded computers to the new USB standard. This card is designed to work with mouse, keyboards, external CD-R/RW's, external hard drives, webcams, and other USB enabled devices. It is 40 times faster than previous USB adapters and 20% faster than Firewire (IEEE-1394). 4 x USB 2.0 ports can transfer data at 480 Megabits per second, making it ideal for external storage, backup, networking and video devices.

Support Interface

### Ordering Information

#### Em104P-USB2

4-port Universal Serial Bus (USB) 2.0 PC/104-Plus module

