

ExpressCards Connectivity Products

PX series - Serial, Parallel, SATA 2.0, Ethernet product lines

Preliminary



and USB ports in the host. This lowers the cost of slot implementations in host systems.

Advanced features

Quatech's ExpressCard maximizes advanced features such as:

- Reliability and flexibility
- Hot plug-n-play
- Auto-configuration

User Benefits

Supporting both PCI Express and USB in both desktop and notebook systems, ExpressCard technology brings new functionality to computer users not found today. It delivers consistent, easy, reliable and non-threatening solutions to connecting devices to systems. It can be plugged in or removed at any time.

OEMs also benefit from this technology, due to a lower implementation cost due to its system and small form factor mechanical design.

If you're looking for versatility, the PCI Express to ExpressCard Adapter can be used to easily transfer an ExpressCard from laptops to desktops.

KEY FEATURES

- New generation of I/O expansion for notebooks
- Delivers thinner, faster and lighter modular expansion to desktop and notebook users
- High Speed ExpressCards with Plug-n-Play
- Baud rates up to 115.2 Kbps with 165500-based units
- External serial ATA generation 2 transfer rate of 3.0Gbps
- 1 and 2 port RS-232 and RS-422/485 PCIe-based ExpressCards by Quatech coming this July
- True Parallel port ExpressCard coming soon -- equivalent to PCMCIA SPP-100
- Rear slot ExpressCard Drive, PCI Express interface for versatility and sharing ExpressCards with desktop

The Next Generation PC Card Technology

The new ExpressCard offers users an easy way to add hardware or media to existing systems. The latest technology provides desktop and mobile computer users a consistent, easy and reliable way to connect devices into their systems. It's mobile and small-form-factor replaces conventional parallel buses for I/O devices with scaleable, high speed interfaces; while improving performance by supporting both PCI Express and USB 2.0 standards.

Add memory, wired or wireless communications, multimedia and security features by inserting the ExpressCard into compliant systems. About half the size and lighter than today's PC Card, the ExpressCard also leverages the proven advantages of PC Card technology including reliability, durability and expansion flexibility.

ExpressCard Technology

Quatech's ExpressCards are available in 1 or 2 ports in either Ethernet, SATA or serial configurations. It improves data transfer speed by using higher performance serial data interfaces rather than parallel buses. The ExpressCard technology uses a simpler connector and eliminates the CardBus controller by using direct connections to PCI-Express

Model Selection Guide

Model No.	Description
LANPX-1G	1 port Gigabit Ethernet ExpressCard
SATA2PX-100	2 port SATA2.0 ExpressCard
SSPX-100	1 port RS-232 serial ExpressCard
DSPX-100	2 port RS-232 serial ExpressCard
*SSXP-100	1 port performance PCIe-based RS-232 serial ExpressCard
*DSPXP-100	2 port performance PCIe-based RS-232 serial ExpressCard
*SSXP-200/300	1 port performance PCIe-based RS-422/485 serial ExpressCard
*DSPXP-200/300	2 port performance PCIe-based RS-422/485 serial ExpressCard
*SPPXP-100	1 high performance EPP parallel port ExpressCard
XDC-B/PCIE-ST	1 rear slot ExpressCard Drive, PCI Express interface
<p>For more information, please visit www.Quatech.com/catalog/express_card.php</p> <p>* PXP series Performance PCI Express-based serial/parallel designs maintaining higher speeds, true UART registries and addressing. Available in July 2007</p>	

Specifications



SATA2PX-100

Features	<ul style="list-style-type: none"> * Fully compliant with ExpressCard Specification 1.0 * ExpressCard/34 Form Factor Module * Serial ATA generation 2 transfer rate of 3.0Gbps * Add two eSATA (external Serial ATA) ports * Supports RAID 0 (stripe) and RAID 1 (mirror) * Supports Native Command Queuing (NCQ), Non-zero offsets NCQ and Out-of-order data delivery NCQ * Supports Hot Plugging on Extend Serial ATA port
OS Compatibility	Windows 2000/XP/Server 2003/Vista
System Req's	ExpressCard-enabled system with an available ExpressCard slot



LANPX-1G

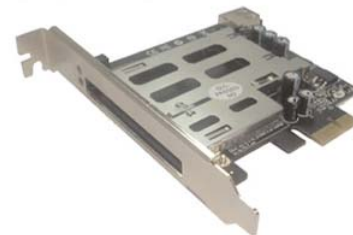
Features	<ul style="list-style-type: none"> * Fully compliant with ExpressCard Specification 1.0 * ExpressCard/34 Form Factor Module * Fully compliant with IEEE 802.3, 802.3u & 802.3ab * 10/100/1000 Mb/s triple-speed operation * Easy plug & play
OS Compatibility	Windows 2000/XP/Server 2003/Vista
System Req's	<ul style="list-style-type: none"> * ExpressCard-enabled system with an available ExpressCard slot * CAT5/CAT5E/CAT6 UTP/STP cable



SSPX-100

DSPX-100

Features	<ul style="list-style-type: none"> * Fully compliant with ExpressCard Specification 1.0 * ExpressCard/34 Form Factor Module * Fast 16550 UART supports baud rates up to 1152Kbps * SSPX-100: provides one serial (DB-9) * DSPX-100: provides two serial (DB-9) * Works with various types of RS-232 devices
OS Compatibility	Windows 2000/XP/Server 2003/Vista
System Req's	ExpressCard-enabled system with an available ExpressCard slot



XCD-B/PCIE-ST

Features	<ul style="list-style-type: none"> * Compliant with PCI Express Base Specification 1.0a * Supports ExpressCard (34/54 Form Factor Module)
OS Compatibility	Windows 2000/XP/Server 2003/Vista
System Req's	<ul style="list-style-type: none"> PCIe enabled system with available PCIe slot Available USB port



5675 Hudson Industrial Parkway Hudson, OH 44236

© 2007 Quatech, Inc.

A DPAC TECHNOLOGIES COMPANY

1.800.553.1170 www.quatech.com

Rev. A 5/2007

Diamond Point International (Europe) Ltd

Suite 13, Ashford House, Beaufort Court

Sir Thomas Longley Road, Rochester, Kent, ME2 4FA, UK

Phone 01634 300900 - Fax 01634 722398 - Email sales@dpie.com - Web www.dpie.com



www.dpie.com