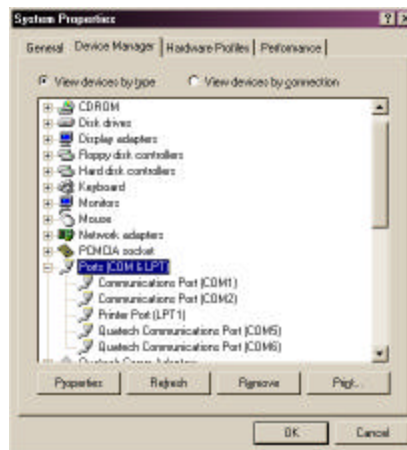


The following is the recommended procedure for re-enumerating the ports of Quatech multi-port serial adapters under Windows 95/98/ME. This may be required for legacy software incapable of using COM numbers greater than four.

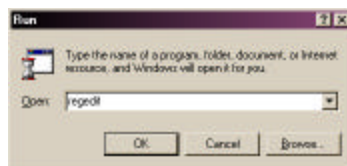
Please note, this is *not* required under Windows 2000/XP; enumeration of ports COM1 through COM255 are allowed, provided they are available. The port number can be changed through the child device properties page in Device Manager (“Port Settings” tab, “Advanced” button). Furthermore, some early versions of the DSP-100 and DSP-200/300 manuals erroneously reported ports had to be COM5 or higher under these operating systems. Users should disregard that statement.

This procedure involves making changes to the registry. As with all modifications of the registry, extreme caution should be used.

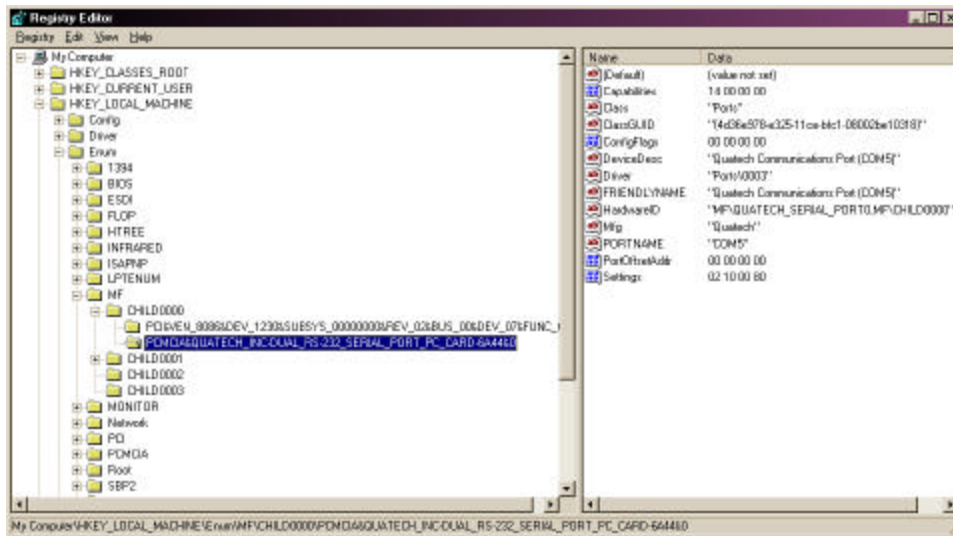
1. Open Device Manager by right-clicking the “My Computer” icon on the desktop, selecting “Properties,” and clicking the “Device Manager” tab. Double-click “Ports (COM & LPT)” and verify the available COM numbers (in this example, COM1 and COM2 are being used by the built-in ports). Close this window when finished.



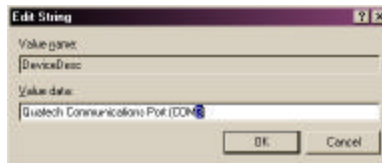
2. From the Start menu, select “Run.” Type `regedit` and click “OK.”



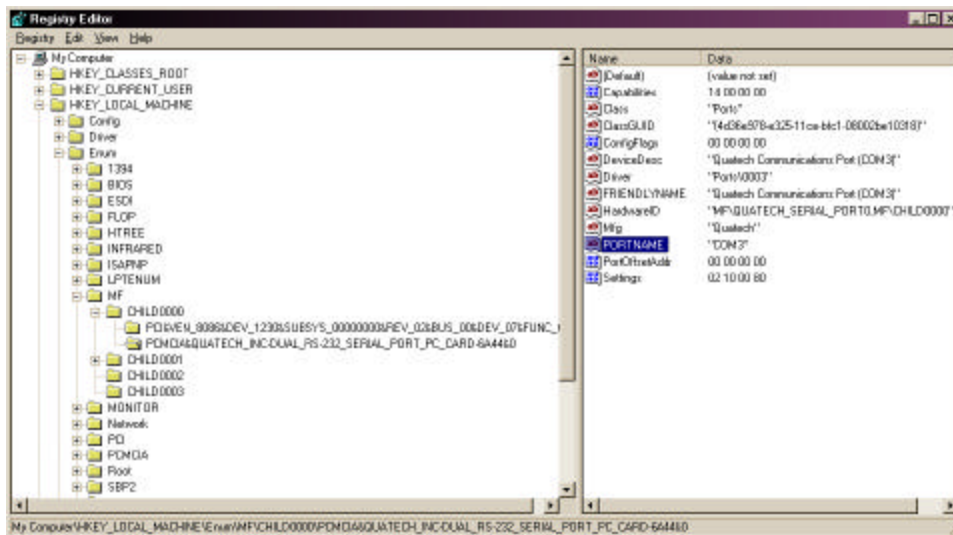
- When the Registry Editor opens, select “My Computer” — “HKEY_LOCAL_MACHINE” — “Enum” — “MF” — “CHILD0000.” Select the Quatech multi-port serial adapter (in this case, a DSP-100).



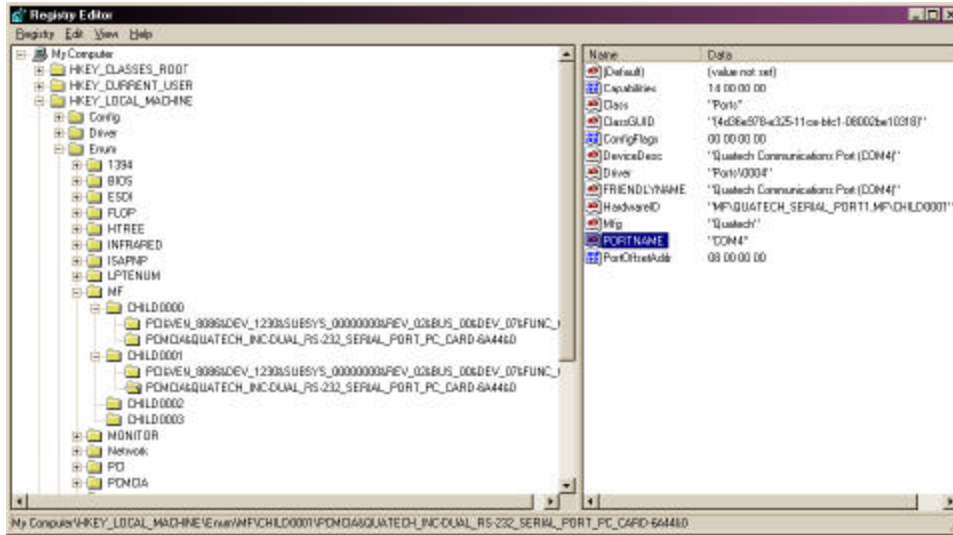
- Double-click the “DeviceDesc” key in the right-hand pane. Change the COM number appropriately (here, COM3).



- Repeat for keys “FRIENDLYNAME” and “PORTNAME.”



6. Select "CHILD0001" and the Quatech multi-port serial adapter in the left-hand pane and edit these same three keys (COM4 in this example).



7. Close the Registry Editor and re-open the Device Manager. Verify the COM numbers have changed correctly.

