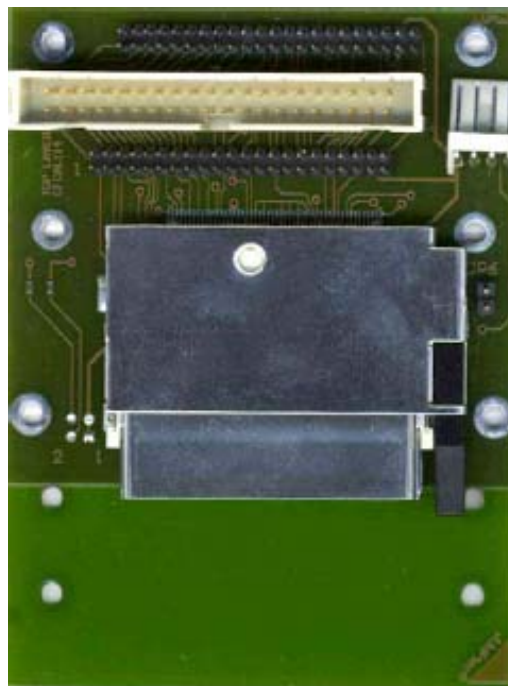


► Kontron User's Guide



► IDE Compact Flash Adapter for all Boards

Document Revision 200

This page intentionally left blank

Table of Contents

1	User Information	4
1.1	About This Document	4
1.2	Copyright Notice	4
1.3	Trademarks	4
1.4	Standards	4
1.5	Warranty	5
1.6	Technical Support.....	5
2	Description	6
2.1	Features	6
2.2	Connector Layout	7
3	Mechanical Drawing	8
4	Ordering Information	9
5	History	10

1 User Information

1.1 About This Document

This document provides information about products from Kontron Embedded Modules GmbH and/or its subsidiaries. No warranty of suitability, purpose, or fitness is implied. While every attempt has been made to ensure that the information in this document is accurate, the information contained within is supplied “as-is” and is subject to change without notice.

For the circuits, descriptions and tables indicated, Kontron assumes no responsibility as far as patents or other rights of third parties are concerned.

1.2 Copyright Notice

Copyright © 2003-2007 Kontron Embedded Modules GmbH

All rights reserved. No part of this document may be reproduced, transmitted, transcribed, stored in a retrieval system, or translated into any language or computer language, in any form or by any means (electronic, mechanical, photocopying, recording, or otherwise), without the express written permission of Kontron Embedded Modules GmbH.

DIMM-PC®, PISA®, ETX®, ETXexpress®, microETXexpress™, X-board®, DIMM-IO® and DIMM-BUS® are trademarks or registered trademarks of Kontron Embedded Modules GmbH. Kontron is trademark or registered trademark of Kontron AG.

1.3 Trademarks

The following lists the trademarks of components used in this board.

- IBM, XT, AT, PS/2 and Personal System/2 are trademarks of International Business Machines Corp.
- Microsoft is a registered trademark of Microsoft Corp.
- Intel is a registered trademark of Intel Corp.
- All other products and trademarks mentioned in this manual are trademarks of their respective owners.

1.4 Standards

Kontron Embedded Modules GmbH is certified to ISO 9000 standards.

1.5 Warranty

This Kontron Embedded Modules GmbH product is warranted against defects in material and workmanship for the warranty period from the date of shipment. During the warranty period, Kontron Embedded Modules GmbH will at its discretion decide to repair or replace defective products.

Within the warranty period, the repair of products is free of charge as long as warranty conditions are observed.

The warranty does not apply to defects resulting from improper or inadequate maintenance or handling by the buyer, unauthorized modification or misuse, operation outside of the product's environmental specifications or improper installation or maintenance.

Kontron Embedded Modules GmbH will not be responsible for any defects or damages to other products not supplied by Kontron Embedded Modules GmbH that are caused by a faulty Kontron Embedded Modules GmbH product.

1.6 Technical Support

Technicians and engineers from Kontron Embedded Modules GmbH and/or its subsidiaries are available for technical support. We are committed to making our product easy to use and will help you use our products in your systems.

Before contacting Kontron Embedded Modules GmbH technical support, please consult our Web site at <http://www.kontron-emea.com/emd> for the latest product documentation, utilities, and drivers. If the information does not help solve the problem, contact us by telephone or email.

Asia	Europe	North/South America
Kontron Asia Inc.	Kontron Embedded Modules GmbH	Kontron America
4F, No.415, Ti-Ding Blvd., NeiHu District, Taipei 114, Taiwan	Brunnwiesenstr. 16 94469 Deggendorf – Germany	14118 Stowe Drive Poway, CA 92064-7147
Tel: +886 2 2799 2789	Tel: +49 (0) 991-37024-0	Tel: +1 (888) 294 4558
Fax: + 886 2 2799 7399	Fax: +49 (0) 991-37024-333	Fax: +1 (858) 677 0898
mailto:sales@kontron.com.tw	mailto:sales-kem@kontron.com	mailto:sales@us-kontron.com

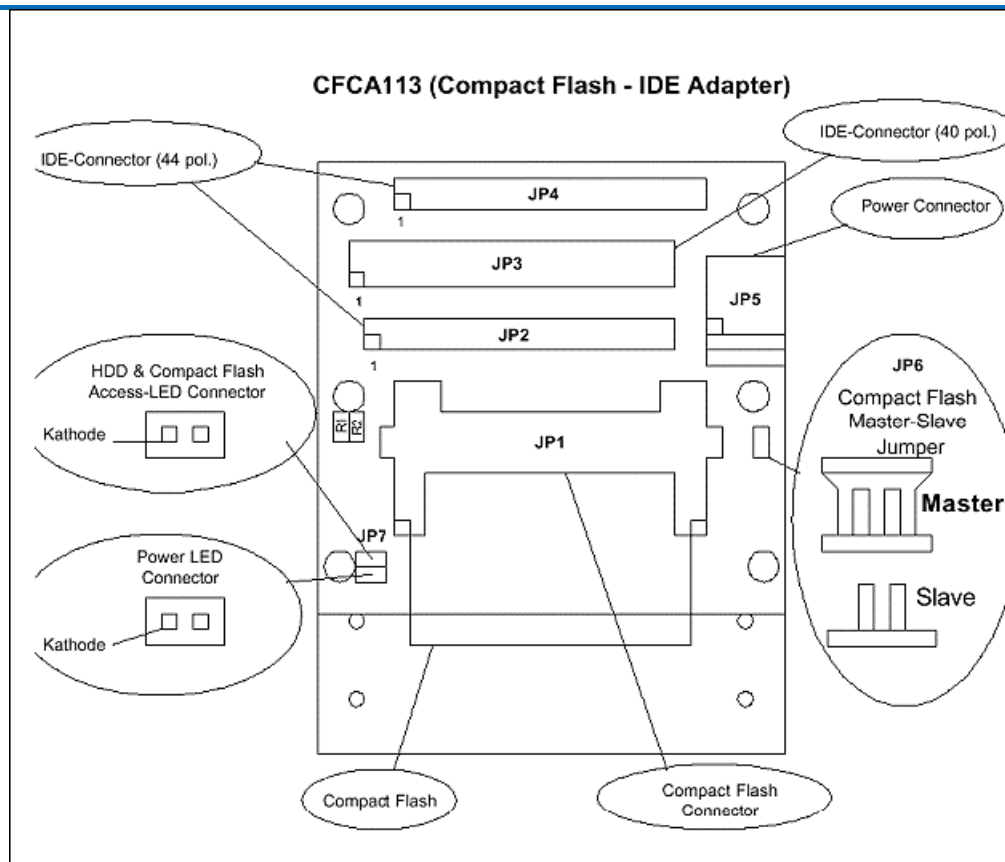
2 Description

Adapter for connecting a Compact Flash Card Type 1 and 2 or a Microdrive, to a 2,5" or 3,5" Harddisk Interface.

2.1 Features

- two IDE 44 pin 2mm pin headers JP4 and JP2
- one IDE 40 pin 2.54mm pin header JP3
- one compact flash socket type II JP1
- external power connector JP5 if not supplied by 44 pin IDE interface

Note: Adapter comes without cables,



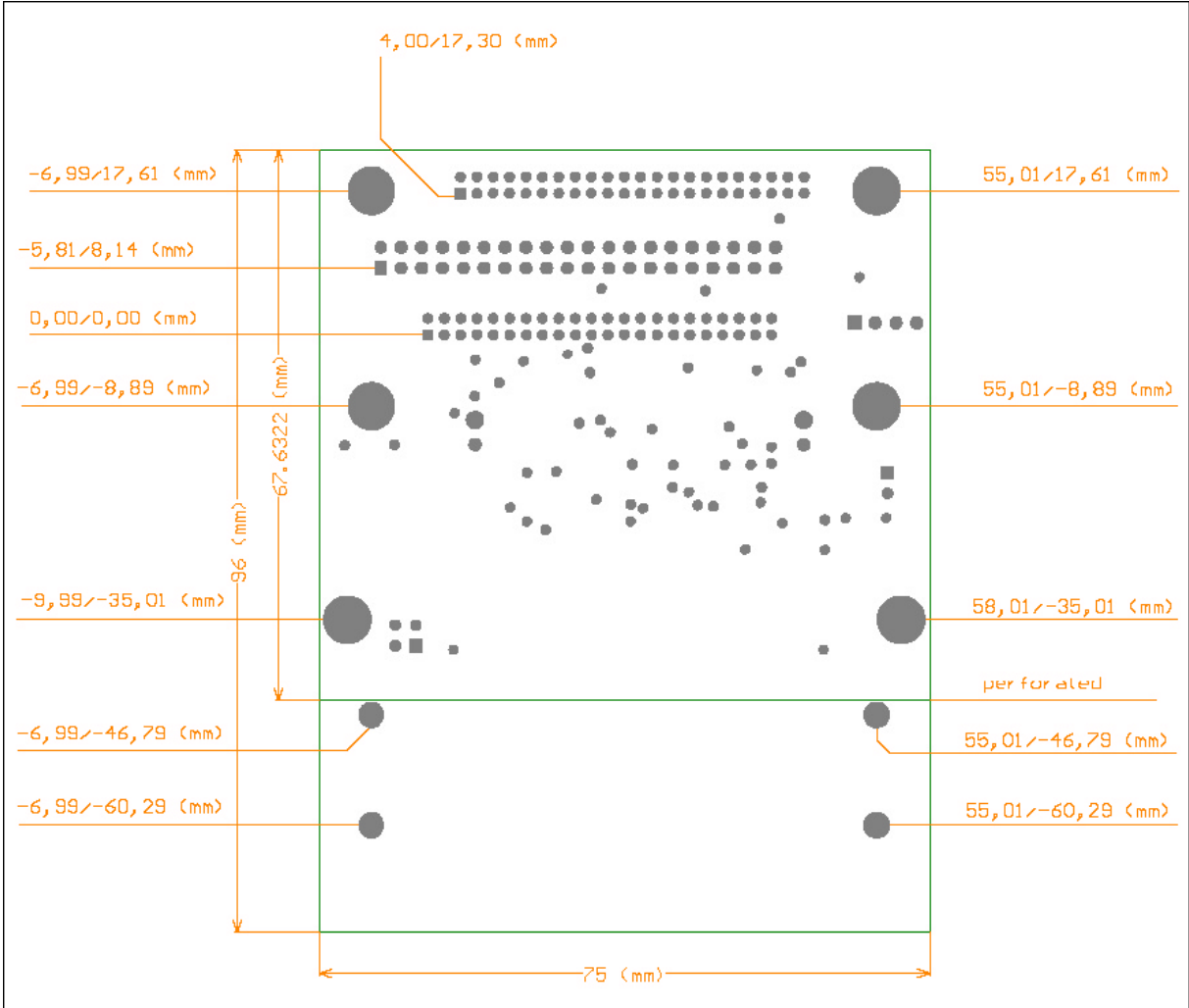
2.2 Connector Layout

JP7	Pin	Signal Name	Function
	1	VCC	5V
	2	Power LED	Cathode of Power LED
	3	VCC	5V
	4	HDD LED	Cathode of HDD activity LED

JP6	Pin	Signal Name	Function
	1	GND	
	2	Slave	shorted to GND -> Master

JP5	Pin	Signal Name	Function
	1	VCC	5V Power supply
	2	GND	GND Power Supply
	3	GND	GND Power Supply
	4	Not connected	

3 Mechanical Drawing



4 Ordering Information

Article Number	Description
96004-0000-00-2	CFC- ADA1 - Adapter for connecting a Compact Flash Card Type 1 and 2 or a Microdrive, to a 2,5" or 3,5" Harddisk Interface.
96066-0000-00-0	CFC-Eject1 - Ejection arm to mount on CFC-ADA1for front-panel use.

Accessories

96021-0000-00-0	KAB-IDE-2MM - both sides 44 pin 2mm grid header, connecting 2.5" IDE device to a 2.5" hard disk interface
-----------------	---

5 History

Date	Document Name	Subjects added, changed, deleted	Changed by
13-Sep-01	CFCAK113.doc	Initial release of short reference	K. Wenke
12-Feb-03	CFCAK114.doc	Add description and order information	M.Ciolacu
19-Oct-04	CFCAK115.doc	Add mechanical drawing, add connector description	G. Vogl
21.09.07	CFCAK200.doc	New corporate design	T. Schertel